



Tropical Storm Beryl Briefing

5:00 PM

Friday, Jul 5th, 2024

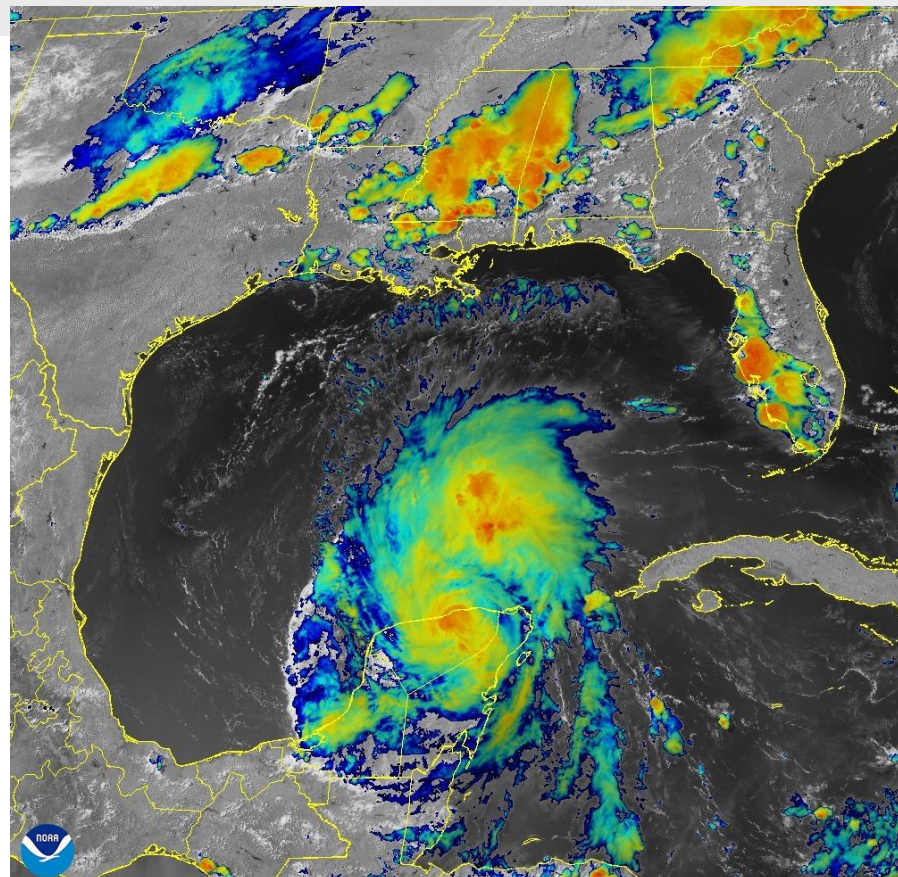
Dan Reilly, NWS Houston/Galveston



Situation Overview

Hurricane Beryl

- Track forecast for Beryl has continued to shift northward today.
- A Hurricane and Storm Surge Watch have been issued along the Texas coast up to Sargent, TX. Winds to hurricane force and storm surge values of 3 to 5 feet will be possible in the watch areas.
- Additional watches may be issued farther up the coast with later advisories.
- Rainfall amounts of 5 to 10 inches are expected with local amounts up to 15 inches where the heaviest rain falls...leading to a flash flood threat.
- Rip currents, elevated tides and seas are likely across all coastal areas even outside watch areas.



05 Jul 2024 20:11Z - NOAA/NESDIS/STAR - GOES-East - Sandwich Composite - GM



Hurricane Beryl

Hurricane Beryl



Note: The cone contains the probable path of the storm center but does not show the size of the storm. Hazardous conditions can occur outside of the cone.

Tropical Storm Beryl
 Friday July 05, 2024
 4 PM CDT Advisory 29
 NWS National Hurricane Center

Current information: x
 Center location 21.2 N 89.2 W
 Maximum sustained wind 65 mph
 Movement WNW at 15 mph

Forecast positions:
 ● Tropical Cyclone ○ Post/Potential TC
 Sustained winds: D < 39 mph
 S 39-73 mph H 74-110 mph M > 110 mph

Potential track area: Day 1-3 (solid line), Day 4-5 (dotted line)
Watches: Hurricane (pink), Trop Stm (yellow)
Warnings: Hurricane (red), Trop Stm (blue)
Current wind field estimate: Hurricane (brown), Trop Stm (orange)

- NHC forecast brings Hurricane Beryl into South Texas early Monday, then tracks more north than northwest.
- A substantial shift has occurred in the track over the past 36 hours already and track could indeed shift again.
- Impacts, intensity will be highly dependent on track.
- Hurricane Watch area shown.
- Stay tuned for updates as watches could be expanded, TS Watches may be added in subsequent advisories.

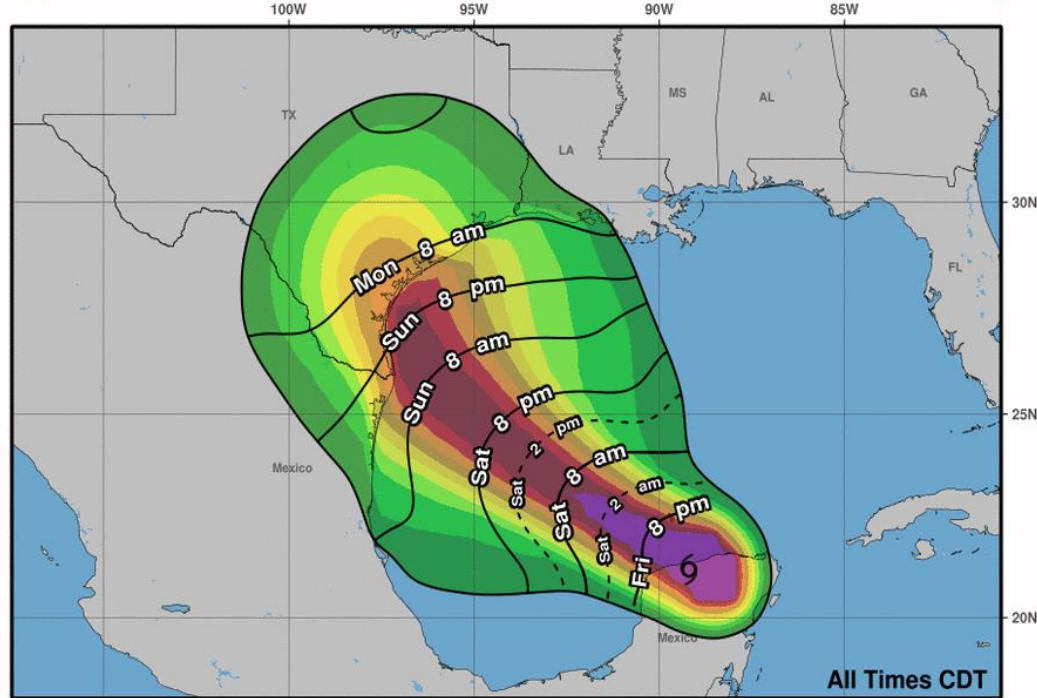


Most Likely Time of Arrival

Hurricane Beryl



Most Likely Arrival Time of Tropical-Storm-Force Winds



- The most likely time of arrival of Tropical Storm Force Winds Sunday night/early Monday morning.
- Note the higher point probabilities have shifted northward with forecast update, now include areas around Matagorda Bay.

Tropical Storm Beryl
 Fri. Jul. 5, 2024 4 pm CDT
 Advisory 29

Storm Location ○ < 34 kt (39 mph)
 & ○ 34-63 kt (39-73 mph)
 Wind Speed ● ≥ 64 kt (74 mph)

5-day chance of receiving sustained 34+ kt (39+ mph) winds

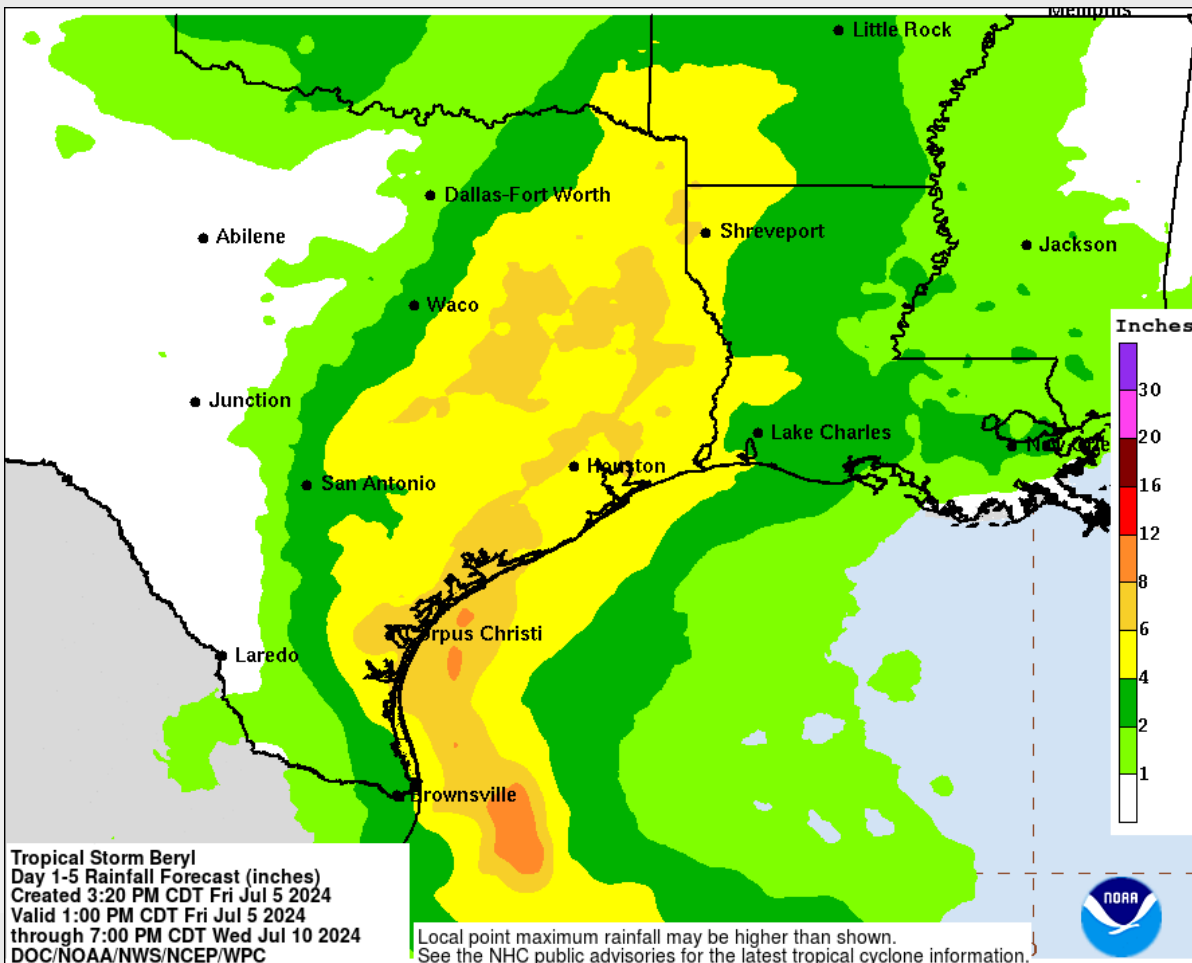
5 10 20 30 40 50 60 70 80 90 100 %



Rainfall Forecast

Rainfall amounts of 5 to 10 inches with localized amounts of 15 inches are expected.

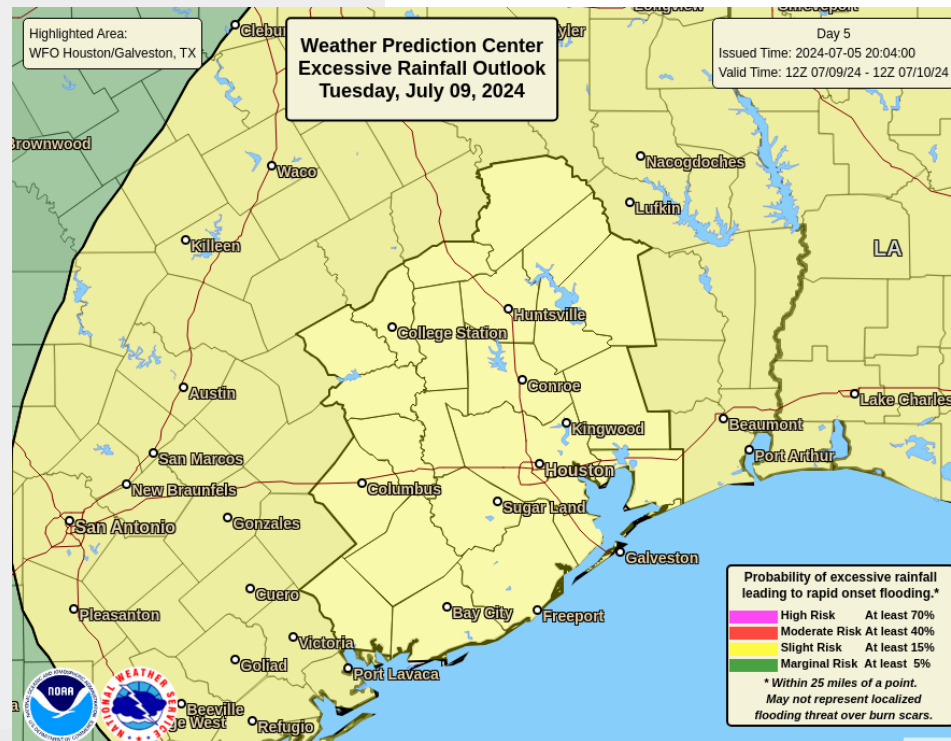
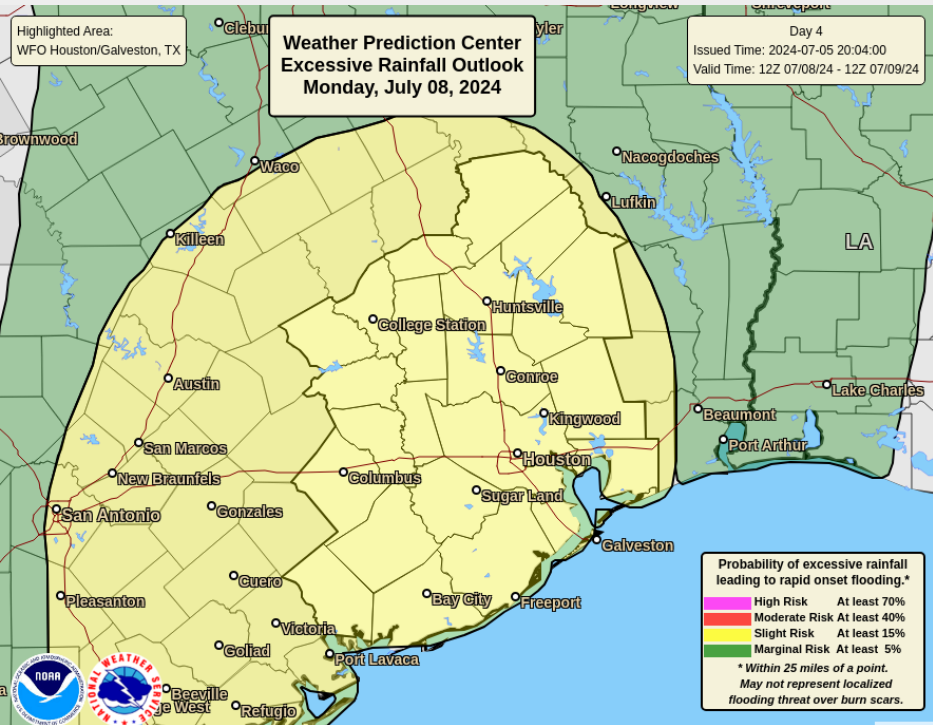
The location of the heavier bands will be highly dependent on track (which is uncertain).





Excessive Rainfall Outlook

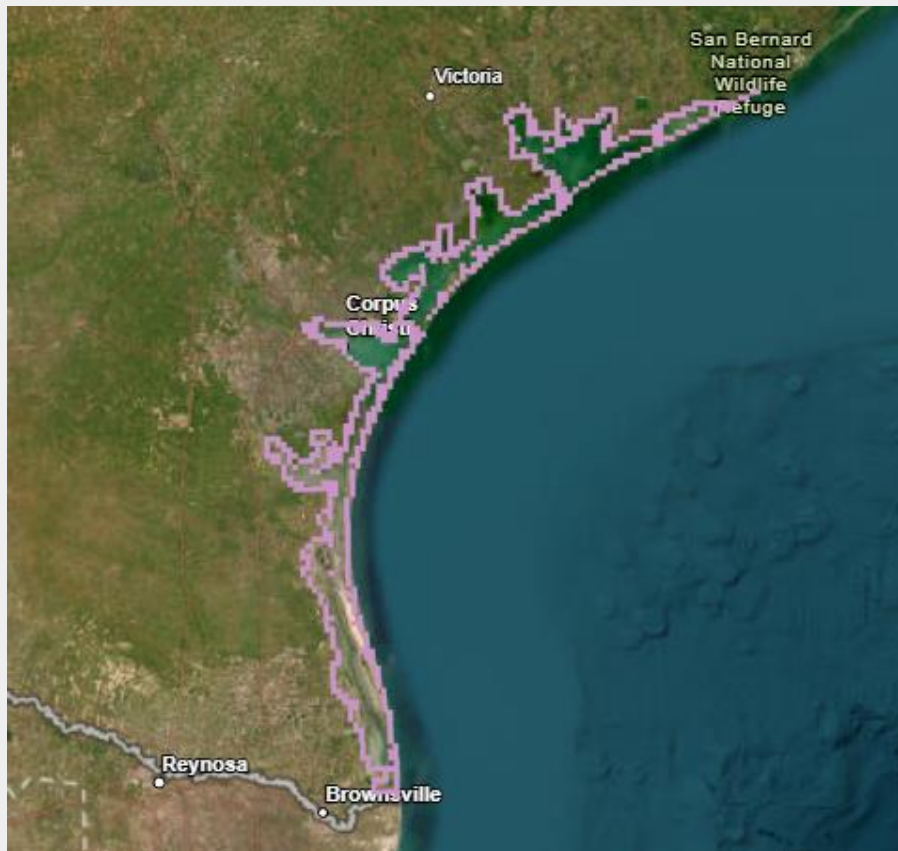
Main Heavy Rain/Flash Flood Threat Locally will be Monday Night and Tuesday for the local area. Risk currently rated as Slight but may be upgraded to Moderate wherever heaviest rain sets up.





Storm Surge Watch / Warning

Beryl

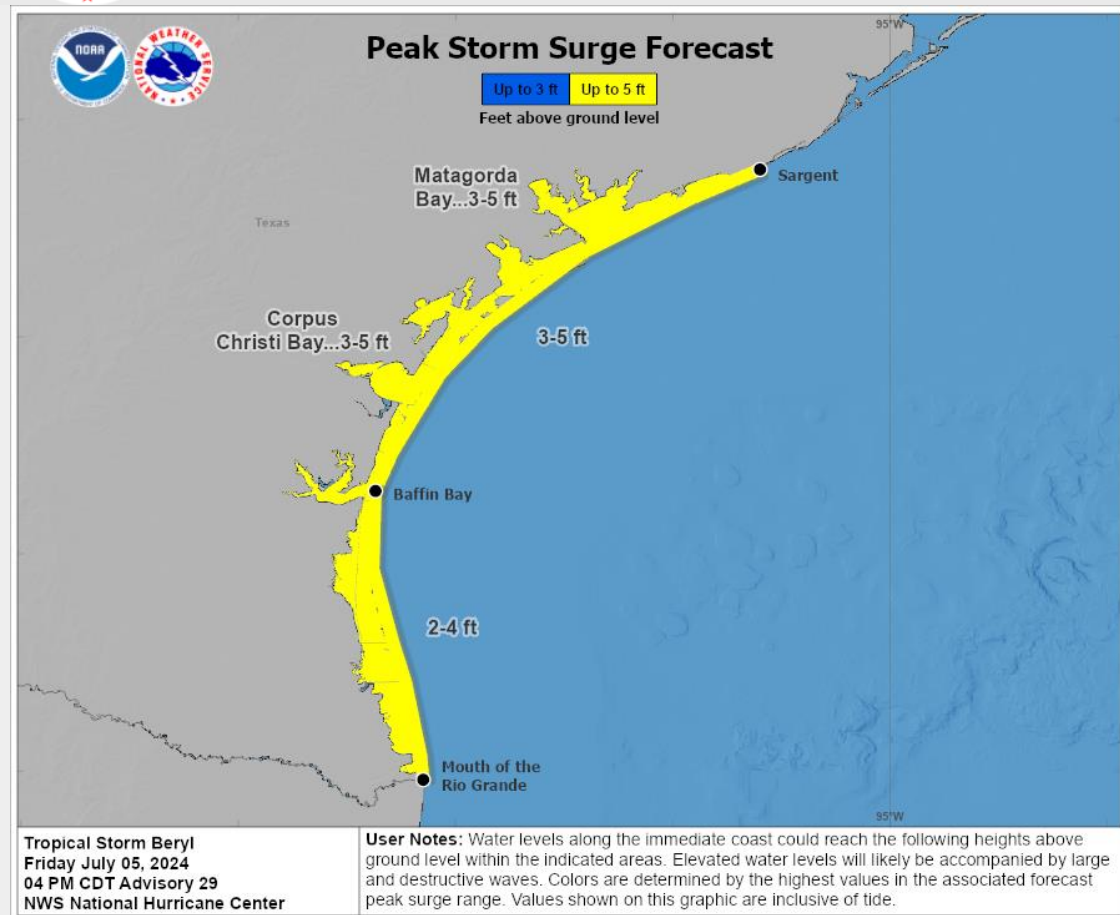


- Storm Surge Watch along Texas Coast up to Sargent, TX
- Three to five feet of water above normally dry ground is possible in watch area.



Peak Surge (Height Above Normally Dry Ground)

Beryl



Peak surge 3 to 5 feet above ground level (above MHHW) in yellow shaded area.

Storm surge levels more uncertain farther up the coast.

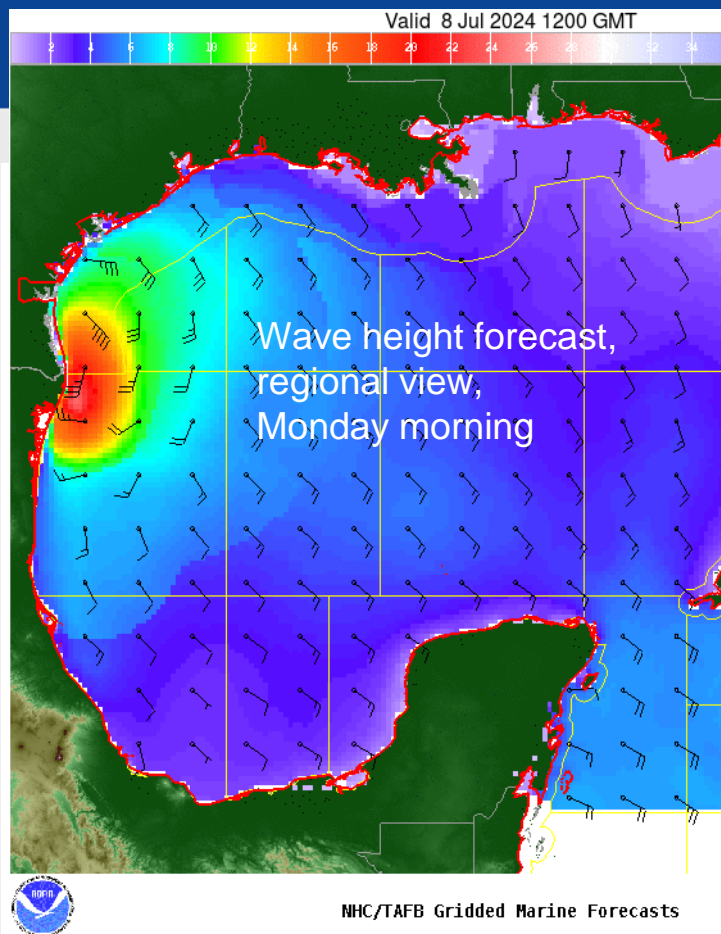
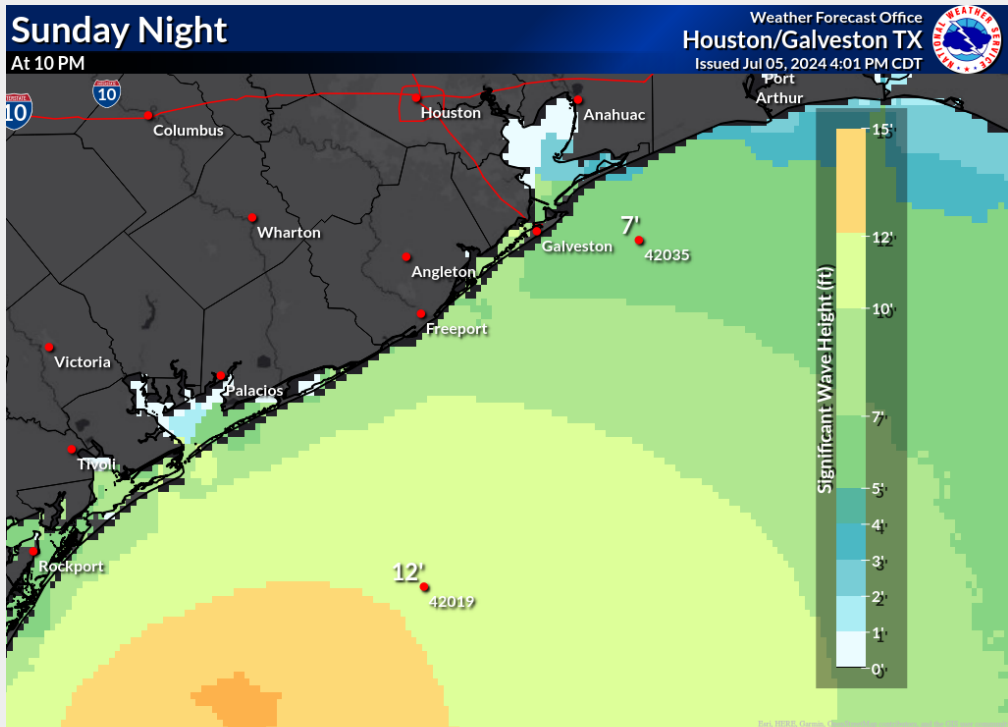
Graphic will be updated to include those areas by tomorrow morning.



Wave Heights

Hurricane Beryl

Wave heights forecasted to be 10 to 15 feet Sunday night into Monday morning but could be higher with a more northerly track, closer to the hurricane.

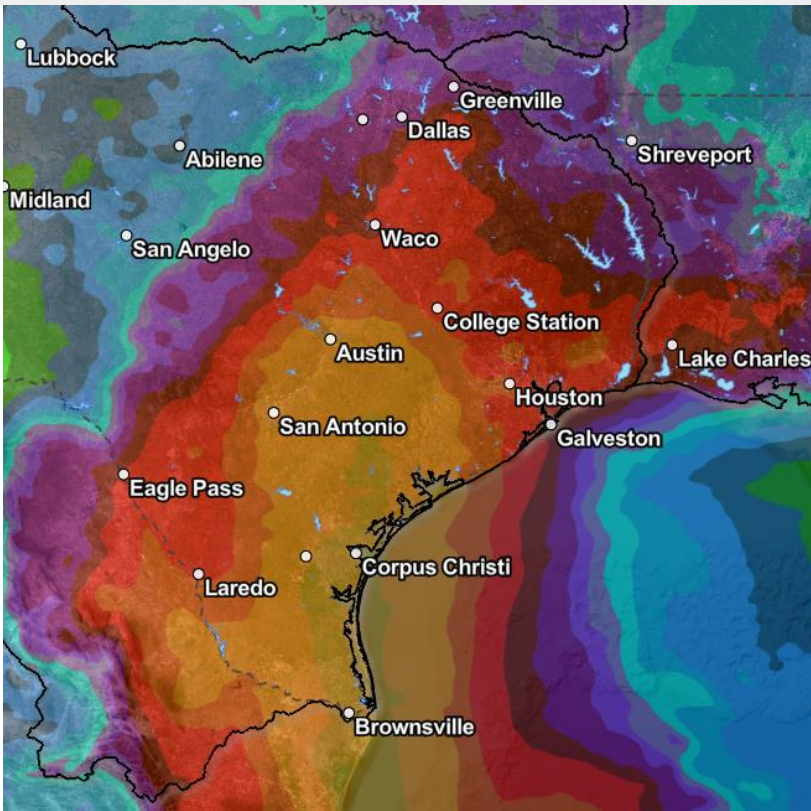




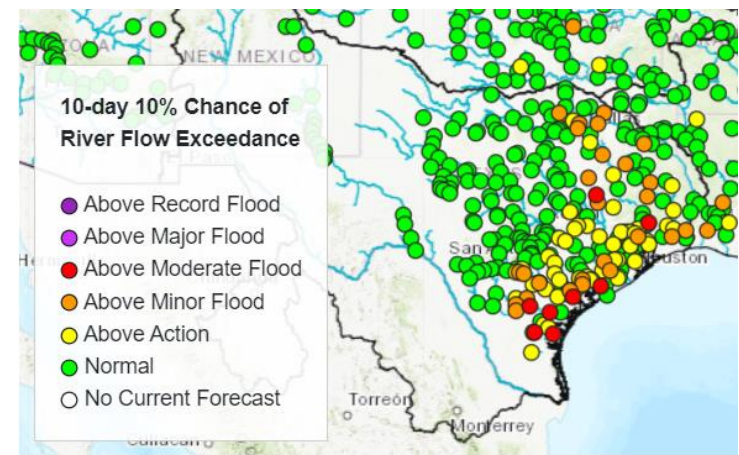
7 Day Forecast Rainfall (WGRFC)

Hurricane Beryl

7 Day
QPF
Inches



- Confidence continues to increase in the expected **IMPACTS**
- Area rivers and lakes in the area of expected heaviest rainfall will respond, watch for river flooding
- 10% Chance of Exceedance (10 days)



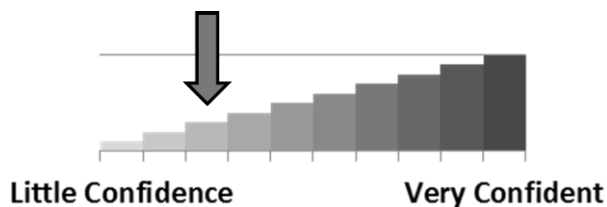


Key Take-Aways

Hurricane Beryl

- Track forecast for Beryl has continued to shift northward today.
- A Hurricane and Storm Surge Watch have been issued along the Texas coast up to Sargent, TX. Winds to hurricane force and storm surge values of 3 to 5 feet will be possible in the watch areas.
- Additional watches may be issued farther up the coast with later advisories.
- Rainfall amounts of 5 to 10 inches are expected with local amounts up to 15 inches where the heaviest rain falls...leading to a flash flood threat.
- Rip currents, elevated tides and seas are likely across all coastal areas even outside watch areas.

Forecast Confidence



Still relatively low confidence in track and intensity with Beryl but confidence is increasing. Will know more after it emerges from the Yucatan and tracks back out over the Gulf.



Local Resources

Hurricane Beryl

Next Briefing:
5:00 PM CDT
Method: Webinar



Web: weather.gov/houston



Phone: 281-337-5074



E-mail: sr-hgx.nws@noaa.gov



Facebook: facebook.com/NWSHouston/



Twitter: twitter.com/NWSHouston



YouTube: youtube.com/nwshouston