



Hurricane Beryl Briefing

11:00 AM

Friday, Jul 5, 2024

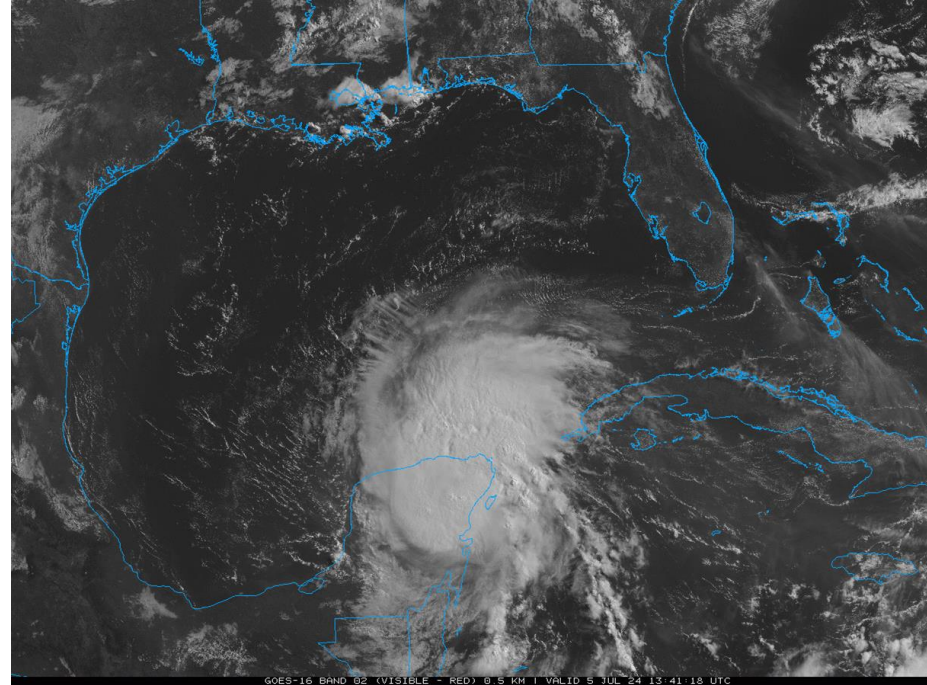
Dan Reilly, NWS Houston/Galveston



Situation Overview

Hurricane Beryl

- Hurricane Beryl is now tracking over Yucatan Peninsula and weakening. Now expected to approach the South Texas coast Monday morning as a hurricane.
- Track forecast past 24 hours has shifted north. Would imply *potential* for stronger winds, higher tides, and heavy rain for portions of our forecast area, especially SW zones around Matagorda Bay. Track forecast could shift again, remains uncertain, stay tuned!
- Rip currents, elevated tides and seas are likely across all coastal areas even outside any watches (to be issued).
- Watches will likely be issued this afternoon for portions of the Texas coast.





Hurricane Beryl

Hurricane Beryl

Note: The cone contains the probable path of the storm center but does not show the size of the storm. Hazardous conditions can occur outside of the cone.



- NHC forecast brings Hurricane Beryl into South Texas early Monday but still uncertainty. A right of cone track could bring it to the mid Texas Coast.
- Impacts, intensity will be highly dependent on track.
- No watches in effect yet, but will likely see those issued this afternoon.
- Stay tuned for updates!

Hurricane Beryl

Friday July 05, 2024
10 AM CDT Advisory 28
NWS National Hurricane Center

Current information: X

Center location 20.7 N 88.3 W
Maximum sustained wind 85 mph
Movement WNW at 16 mph

Forecast positions:

● Tropical Cyclone ○ Post/Potential TC
Sustained winds: D < 39 mph
S 39-73 mph H 74-110 mph M > 110 mph

Potential track area:

Day 1-3 Day 4-5

Watches:

Hurricane Trop Stm

Warnings:

Hurricane Trop Stm

Current wind field estimate:

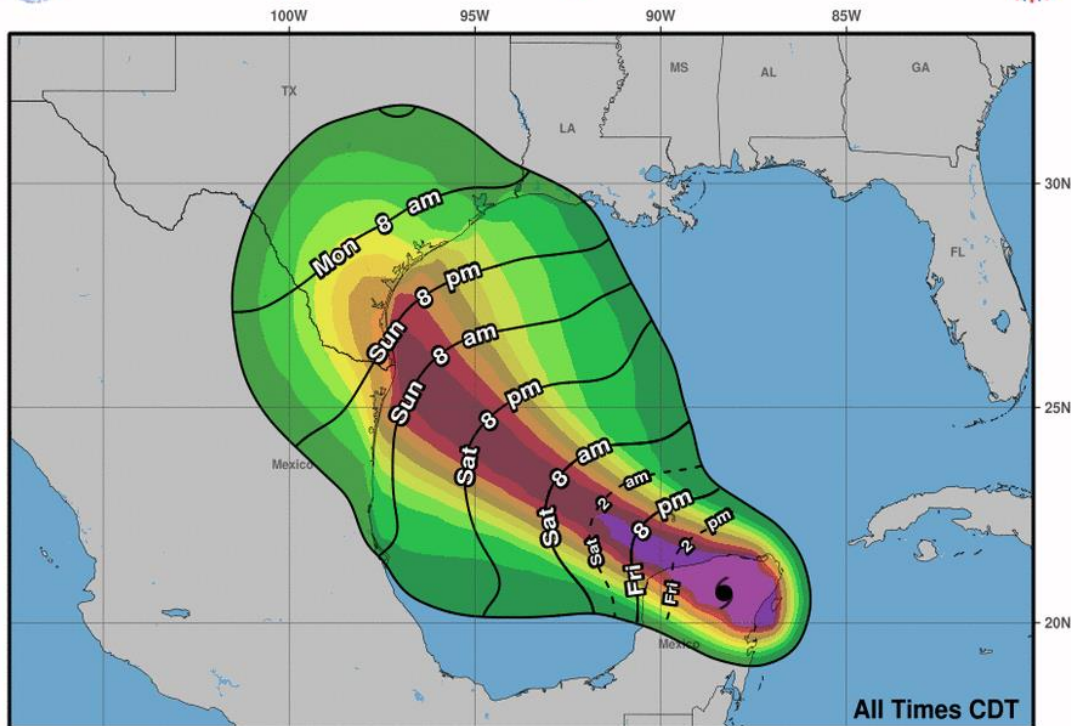
Hurricane Trop Stm



Most Likely Time of Arrival

Hurricane Beryl

Most Likely Arrival Time of Tropical-Storm-Force Winds



All Times CDT

- The most likely time of arrival of Tropical Storm Force Winds for Southeast Texas coast would be Sunday night.
- Note the higher point probabilities down the coast but not zero for any coastal areas.
- For our forecast area, areas in and around Matagorda Bay have the highest probabilities.
- Look for hurricane and/or tropical storm watches to be issued today to highlight areas with greatest wind threat.

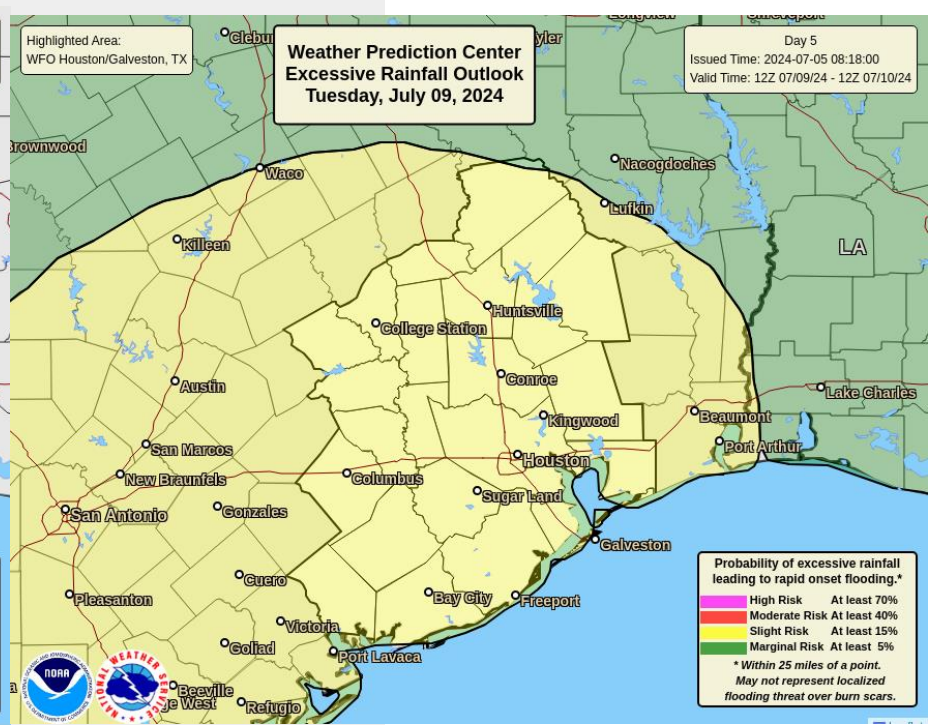
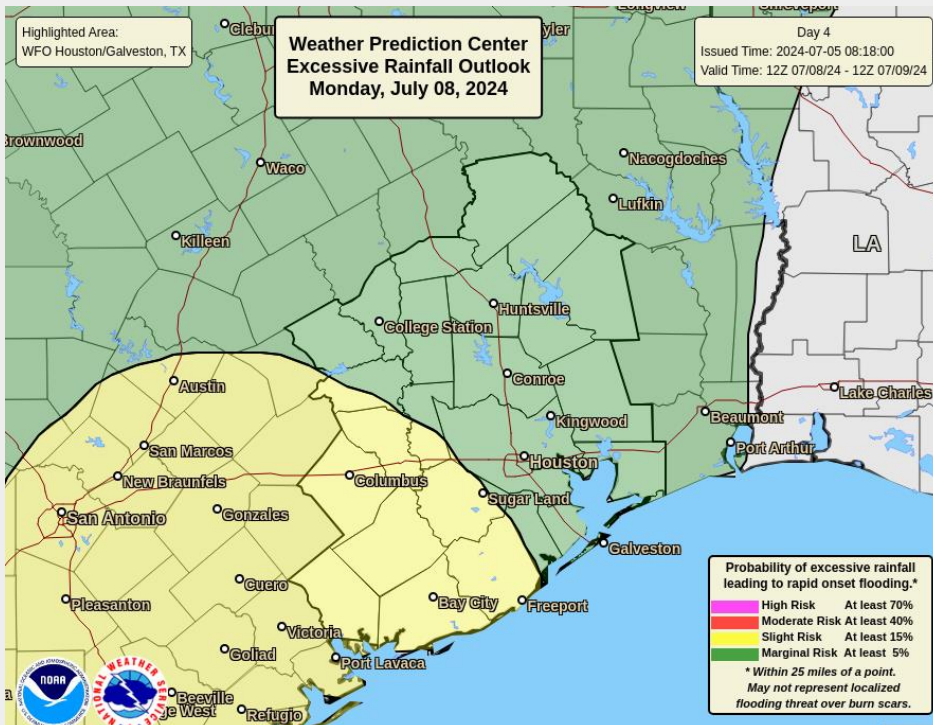
Hurricane Beryl
Fri. Jul. 5, 2024 10 am CDT
Advisory 28

Storm Location	○ < 34 kt (39 mph)	5-day chance of receiving sustained 34+ kt (39+ mph) winds
&	○ 34-63 kt (39-73 mph)	
Wind Speed	● ≥ 64 kt (74 mph)	



Excessive Rainfall Outlook

Main Heavy Rain/Flash Flood Threat Locally will be Monday Night and Tuesday for the local area.



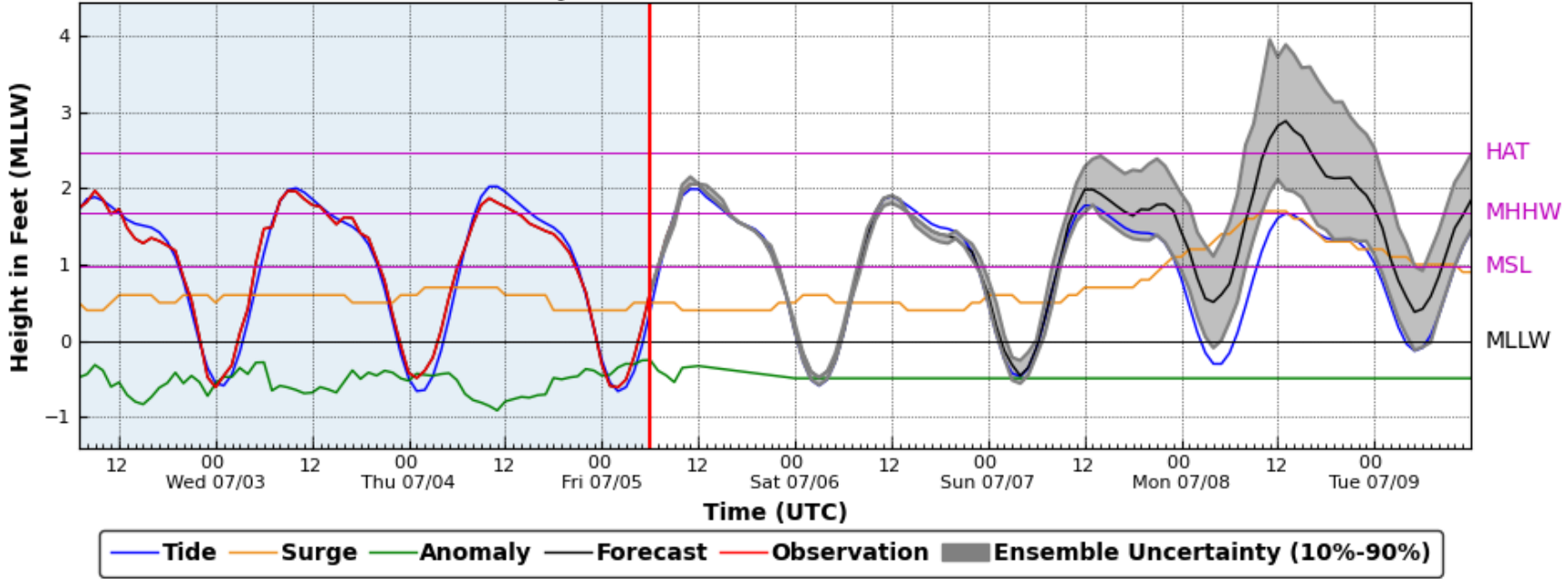


High Tides, Water Levels, Starting Late Sunday, Monday

Hurricane Beryl

Will see some higher water levels Sunday and especially Monday and Tuesday. How high will be highly dependent on track, intensity, highly uncertain. This mornings surge modelling show tide levels potentially up to 4 feet above MLLW (3 feet above MHHW) but big spread. Will likely have more information on this with future briefings. (On this map subtract 5 hours to convert UTC to CDT)

Galveston Bay Entrance TX 8771341, 07/05/2024 12:02 UTC



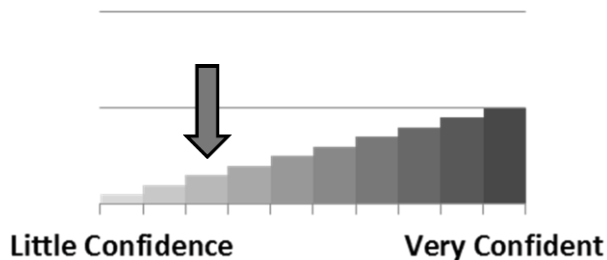


Key Take-Aways

Hurricane Beryl

- Hurricane Beryl is now tracking over Yucatan Peninsula and weakening. Now expected to approach the South Texas coast Monday morning as a hurricane.
- Track forecast past 24 hours has shifted north. Would imply *potential* for stronger winds, higher tides, and heavy rain for portions of our forecast area, especially SW zones around Matagorda Bay. Track forecast could shift again, remains uncertain, stay tuned!
- Rip currents, elevated tides and seas are likely across all coastal areas even outside any watches (to be issued).
- Watches will likely be issued this afternoon for portions of the Texas coast

Forecast Confidence



Still relatively low confidence in track and intensity with Beryl but confidence is increasing. Will know more after it emerges from the Yucatan and tracks back out over the Gulf.



Local Resources

Hurricane Beryl

Next Briefing:
5:00 PM CDT
Method: Webinar



Web: weather.gov/houston



Phone: 281-337-5074



E-mail: sr-hgx.nws@noaa.gov



Facebook: facebook.com/NWSHouston/



Twitter: twitter.com/NWSHouston



YouTube: youtube.com/nwshouston